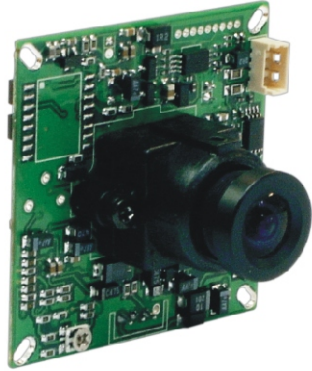


MODULE CAMERA

TCM-3242, TCM-3242X 42x42 SIZE MODULE CAMERA



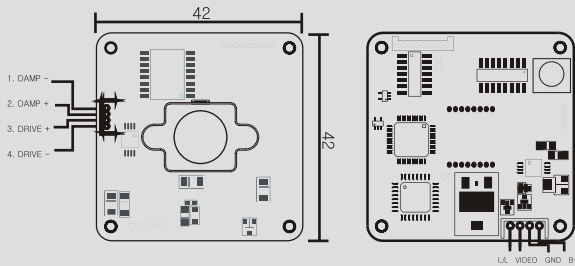
- FEATURES -

- TCM-3242 : 1/3" SONY DSP Super HAD B/W CCD
TCM-3242X : 1/3" SONY DSP EX-View B/W CCD
- 420TV Lines Horizontal Resolution
- 42x42mm Size One Board Camera
- Min. Illumination :
TCM-3242 : 0.05Lux/F1.2
TCM-3242X : 0.003Lux/F1.2

* Varifocal Lens : 2.8~11.0mm, 4.0~9.0mm



- DIMENSION -



DC IRIS Pin connection

1. DAMP -
2. DAMP +
3. DRIVE +
4. DRIVE -

Video / Power / L Pin connection

1. Line-Lock
2. Video out
3. GND
4. DC12V

- SPECIFICATION -

TCM-3242 / TCM-3242X		
Signal Format	EIA	CCIR
Horizontal Resolution	420TV Lines	
Image Sensor	TCM-3242 : 1/3" SONY DSP Super HAD B/W CCD TCM-3242X : 1/3" SONY DSP EX-View B/W CCD	
Scanning System	525 lines interlaced	625 lines interlaced
Synchronization	Internal / Line Lock	
Video Output	CVBS : 1.0Vp-p/75	
Min. Illumination	TCM-3242 : 0.05Lux/F1.2 TCM-3242X : 0.003Lux/F1.2	
Signal to Noise Ratio	45dB or more (AGC Off)	
Gamma	0.45	
Gain Control	AUTO	
Input Voltage	DC 12V (±10%)	
Power Consumption	Max. 1.8W	
Operating Temperature	-10°C to +55°C	
Operating Humidity	Under 85% Non-condensing	
Lens	Board Lens, Pinhole Lens, DC Varifocal Lens	
Dimension	42(W) x 42(H)mm	